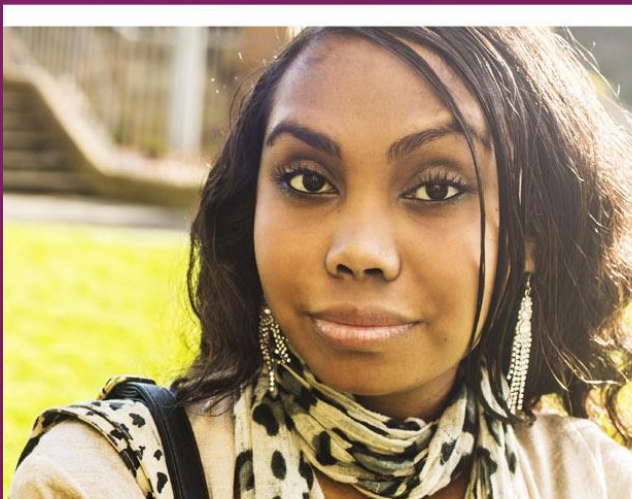




Health
Women NSW



NSW DOMESTIC AND FAMILY VIOLENCE BLUEPRINT FOR REFORM 2016-2021:

SAFER LIVES FOR WOMEN, MEN AND CHILDREN



PREVENTION & EARLY INTERVENTION



“ I know for me personally,
**had I gone into this relationship
with some sort of confidence ...**
I would have **never**, I don't believe,
been in the predicament where I was...”



DOMESTIC AND FAMILY VIOLENCE
average **INCREASE 1.5%** per year



DOMESTIC VIOLENCE RELATED ASSAULT
5.5 TIMES HIGHER
FOR ABORIGINAL FEMALES
than non Aboriginal females

PREVENTION & EARLY INTERVENTION



Violence is **prevented through changes** to attitudes, social norms and structures that underpin domestic & family violence



Population groups at **higher risk** of domestic and family violence are identified early and supported

FOCUS: PREVENTION & EARLY INTERVENTION



Galvanizing all quarters of society to actively engage with the community



Fostering an attitude of respect towards women by redefining messages around gender equity, power & relationships



Building social structures that support equality & safety

NSW GOVERNMENT SPEND ON DFV SERVICES



■ Crisis/recovery ■ Early intervention/prevention

WHAT WE HEARD



**INCREASE
PREVENTION &
EARLY
INTERVENTION
INITIATIVES**



**CONTINUE
INVESTMENT
IN CRISIS
SUPPORT**



**INCREASE
EVIDENCE
BASED
PREVENTION
ACTIVITIES**



“ Had I known (about DFV)

I would have reached out for support sooner because it's made all the difference in my journey. ”

“ Had I known

what was available to me, I might have perhaps gone to the women's service and got some support through there... ”



THE NEXT 12 MONTHS

PREVENTION & EARLY INTERVENTION

Focus 2016-17

Invest \$20 million
Innovation Fund

Develop NSW
Prevention & Early
Intervention **Strategy**

Rollout
ethical targeted
bystander initiatives

Design a NSW
research agenda to
measure violence
supportive attitudes

Hold **community DFV**
forums

Expand Tackling
Violence to areas with
high rates of DFV



SUPPORTING VICTIMS



Homelessness



Financial
Distress



Child Protection
Interventions



Risk to Safety
& Wellbeing



Clients using
Women's Domestic Violence
Court Advocacy Services

DOUBLED

between 2009-2015

60,000+
POLICE REFERRALS

In the last 6 months of 2015
to DFV support services



2010-2014

17%

INCREASE

Apprehended Domestic
Violence Orders





POLICE
call-outs



Increased
HOSPITAL services



CHILD
PROTECTION
services



Requests for
EMERGENCY
ACCOMMODATION



Demand for
LONG-TERM
HOUSING



LEGAL
Assistance



COURTS &
CORRECTIVE
services



“ So you’re **constantly being referred** from place to place ”

“ Then you **have to repeat** your story ”

“ At one point you think, **is it even worth it?** ”

“ Then it becomes **expensive** having to drive to these **extra appointments** ”

“ Maybe it’s **better to suck it up and deal with it,**
than having to relive everything that’s happened ”



THE NEXT 12 MONTHS



New funding

\$53 MILLION

OVER 4 YEARS

**FOR A FULL
STATEWIDE
ROLLOUT OF
SAFER PATHWAY**



Women's Domestic Violence
Court Advocacy Program

\$40 MILLION



Innovation Fund

\$20 MILLION

**PREVENTION, EARLY
INTERVENTION &
CRISIS RESPONSE**



Staying Home Leaving
Violence Program

\$25 MILLION

OVER 4 YEARS



Start Safely

\$100 MILLION

OVER 4 YEARS

**SHORT-MEDIUM
TERM HOUSING
ASSISTANCE**



\$2.8 MILLION

**FOR WOMEN'S
COMMUNITY
SHELTERS**



HOLDING PERPETRATORS ACCOUNTABLE

In 2015
NSW Police attended
146,803
DFV-related matters



**HOLDING PERPETRATORS
ACCOUNTABLE**

to reduce reoffending

DELIVERING ON THE PREMIER'S PRIORITY



Prevent



Respond

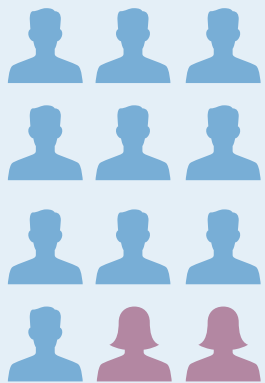


Measure

Reduce domestic violence reoffending within 12 months by

 **5% BY 2019**

“...Men are falling through the large gaps and
**are not held accountable for their behaviour
and the cycle of violence continues**”



In 2015

85%
**PERPETRATORS
WERE MALE**



DFV is the leading contributor of preventable

**ILL HEALTH,
DISABILITY &
PREMATURE DEATH**

for women under 45

DELIVERING TIMELY, INNOVATIVE, EVIDENCE-BASED APPROACHES



First time
offenders



Communities at risk of
experiencing DFV



Culturally and
linguistically
diverse communities



Aboriginal
communities



THE NEXT 12 MONTHS

STRATEGIES TO HOLD PERPETRATORS ACCOUNTABLE

2016-17

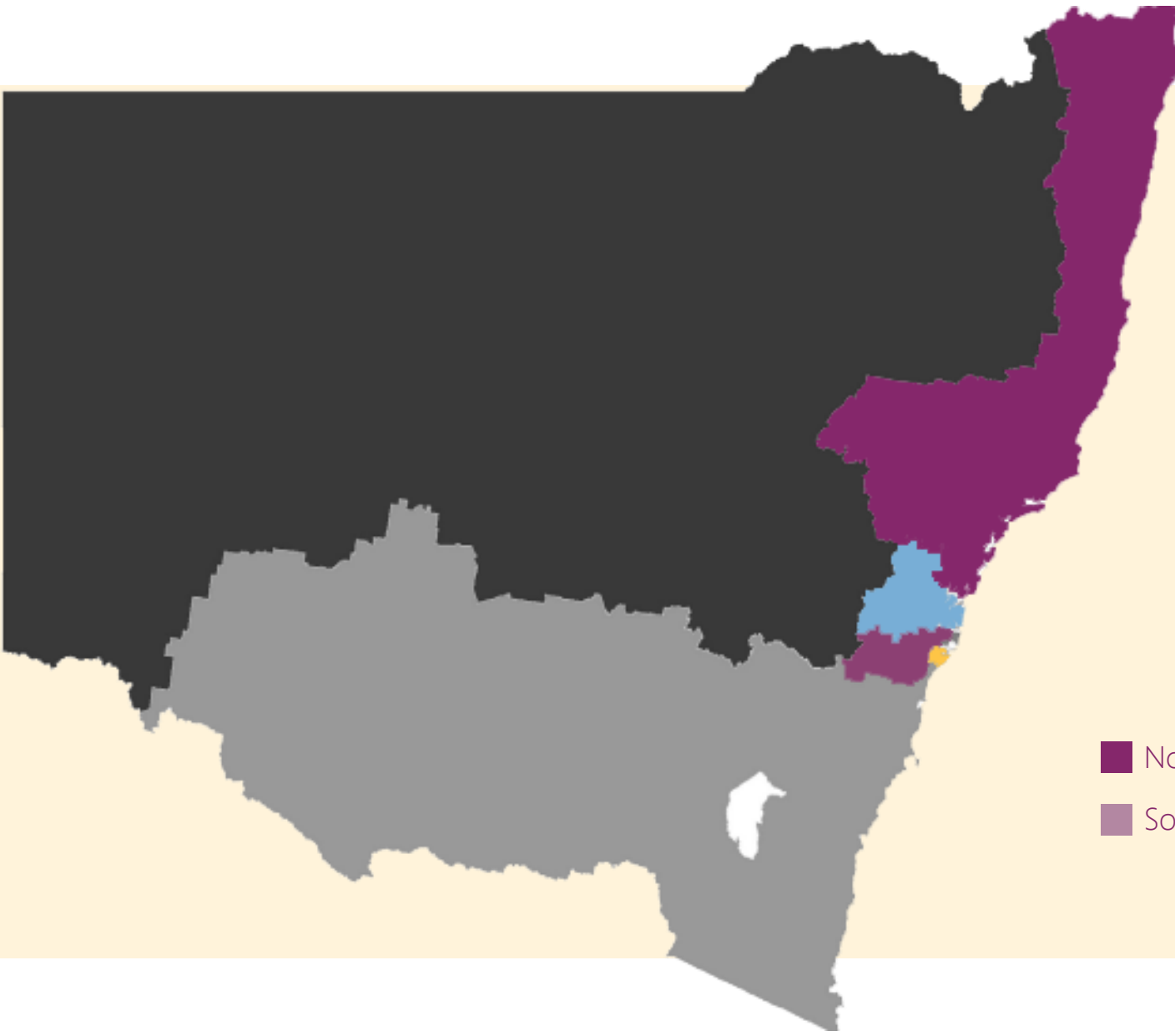
DEVELOP CAPACITY:
**COMMUNITY
BASED**

Men's behaviour
change sector



\$2.4 
MILLION
**MEN'S REFERRAL
SERVICE**

\$19.5 
MILLION
INTERVENTIONS
for high risk offenders



2016/17

Statewide roll out

\$22 MILLION

**POLICE HIGH RISK
OFFENDER TEAMS**

- Northern Region
- North West Metropolitan Region
- South West Metropolitan Region
- Central Metropolitan Region

Victim safety
\$2.9 MILLION
GPS Tracking

\$1.8 MILLION
To Reduce ADVO Breaches



**DELIVERING QUALITY
SERVICES & IMPROVING
THE SERVICE SYSTEM**

CHILDREN

at risk of **significant harm:**



**DFV IS ONE OF THE TOP
THREE REPORTED ISSUES**

to the NSW Department of Family
and Community Services



IMPROVING THE SYSTEM DELIVERING QUALITY SERVICES

Some mainstream service providers lack understanding about DFV & appropriate responses

Inconsistent service quality for victim recovery & perpetrator accountability

Complex funding & tender processes

Inconsistent data collection & system performance measures



“In relation to domestic violence specialist services & training, there

needs to be a standard of training...

to ensure they [DFV practitioners] are appropriately qualified...

including standards for individual supervision ”

- Service Provider -

DFV OUTSIDE METROPOLITAN AREAS

The domestic and family violence assault rate is

UP TO 10 TIMES HIGHER

in rural, regional and remote local government areas compared to the NSW average



THE NEXT 12 MONTHS & BEYOND

MEASURES FOR IMPROVING THE SERVICE SYSTEM

Co-design **service quality standards** & training requirements

Enhance skills development & **capacity building**

Review & improve **regional governance**

Conduct an **inter-agency review** of the DFV service system

Support training to improve **risk assessment & safety planning** for families with complex needs

Investigate ways in which the commissioning of services can be transitioned to **flexible allocations of funding** that are focused on achieving outcomes for clients



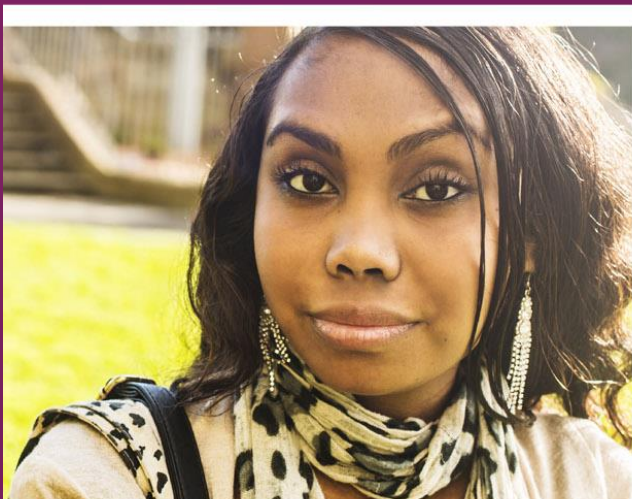
Set up **state-wide performance metrics** and data collection systems

Enable **co-investment** with the Commonwealth & private sector

Convene a Ministerial **DFV Corporate Leadership Group**



Health
Women NSW



NSW DOMESTIC AND FAMILY VIOLENCE BLUEPRINT FOR REFORM 2016-2021:

SAFER LIVES FOR WOMEN, MEN AND CHILDREN